

REPRSCOPE - The observatory of cattle reproductive performance in France

ICAR&IDE/ISO
CONFERENCE ANALYTICAL WEEK
2019 PRAGUE
CZECH REPUBLIC

21/06/2019

BIDAN Fabrice, LE MÉZEC Pascale, DIMON Philippe, GELÉ Marine (Idele)
SALVETTI Pascal (Alice)
LEJARD Agnès (FCEL)
BAREILLE Nathalie (ONIRIS-INRA)



What is Reproscope?

Discussions
experts / technicians (BDNI* / SNIG)**

Databases

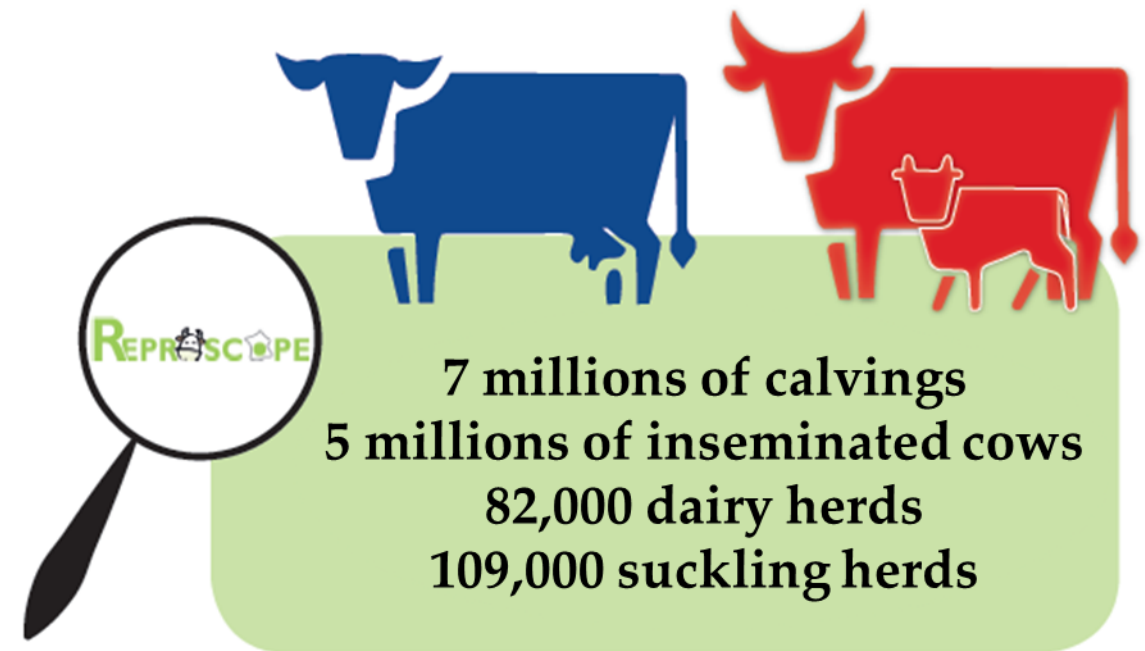


+



**Building an observatory of cattle
reproduction in France**

www.reproscope.fr



**BDNI : National Identification Database*

***SNIG : National System of Genetic Information*

Targets? A project for **breeders...**

...but not only: advisors

consultancy bodies

agricultural education

researchers...

Advantages?

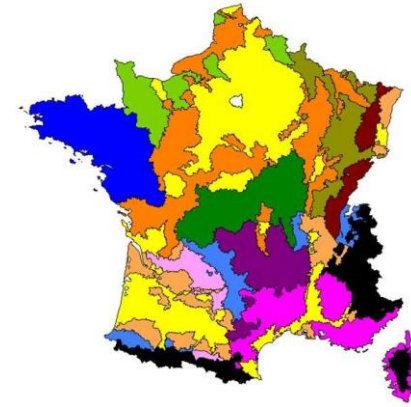
- **Open to everyone online**
- **Updated each year**
- **Uniform and complete: all cows and herds in France**



Choose your population

Characteristics of the herd

- Geographic area
- Type of production
- Breed
- Specialisation
- Production level
- Herd size



Reproduction management

- Calving seasons
- % of first-calf heifers
- % of AI
- % of crossbreeding
- Age at 1st calving objective



Choose the scale

Animals performances

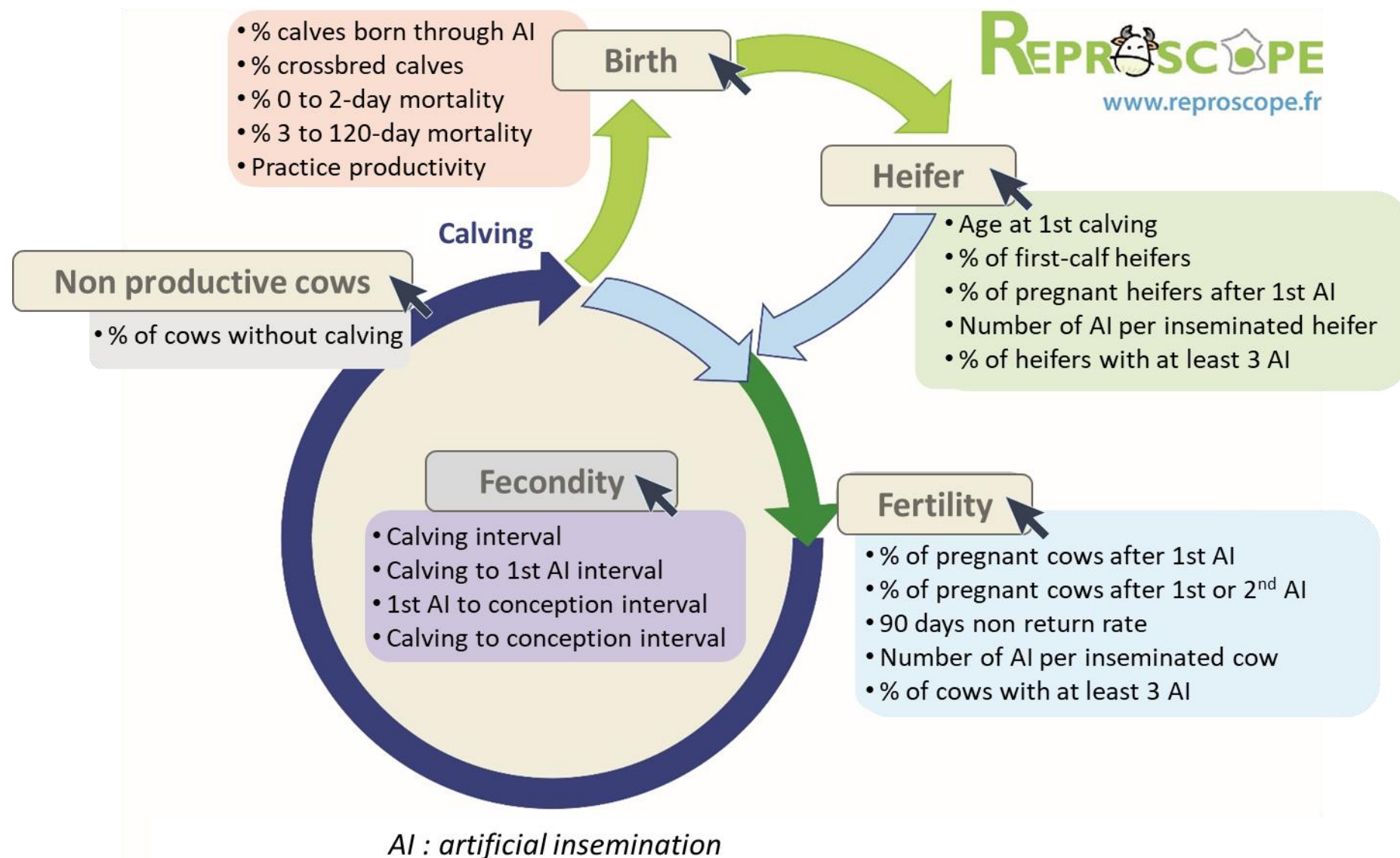


Herds performances



Which performances?

20 criteria



Look at the results

Example : % pregnant cows after 1st AI

- Herds performances
- 2016-2017
- France



48,151 Herds

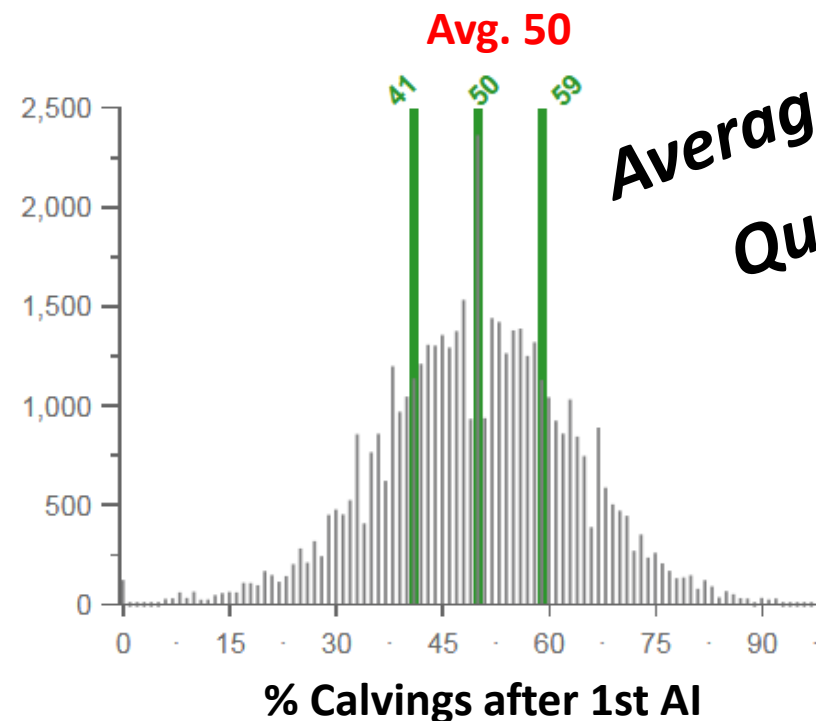
- Animals performances
- 2016-2017
- France



3,858,393

Calved females

Number of herds



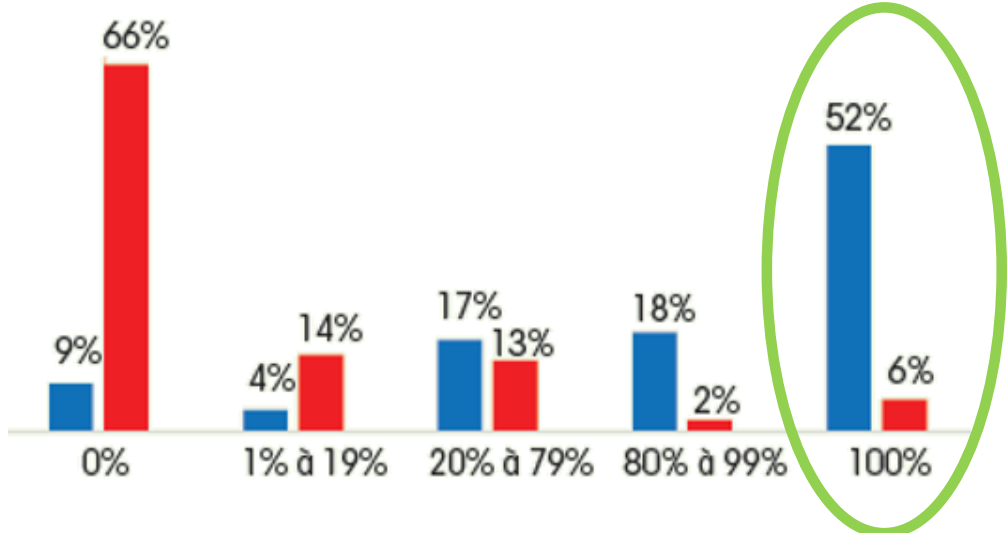
Averages
Quartiles
Distributions
Frequencies

Fertility (cows)		
	Number	Average
Calvings after 1st AI	402,220	71%

Possible use of the observatory?

To describe reproduction practices

% of calving from AI



58,635 herds



- 79 % inseminated cows in average

75,666 herds



- 13 % inseminated cows in average

% pregnant cows after 1st AI

- **51%, i.e. +1%** ...in comparison to national reference
- **62%, i.e. +5%**

Possible use of the observatory?

To show performances variability

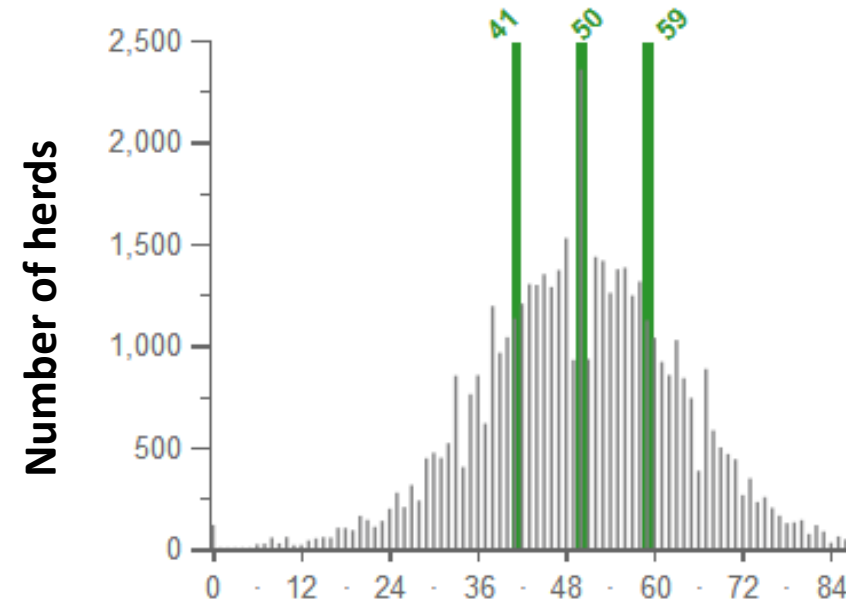
Example :

- % pregnant cows after 1st AI
- Herds performances
- 2016-2017
- France



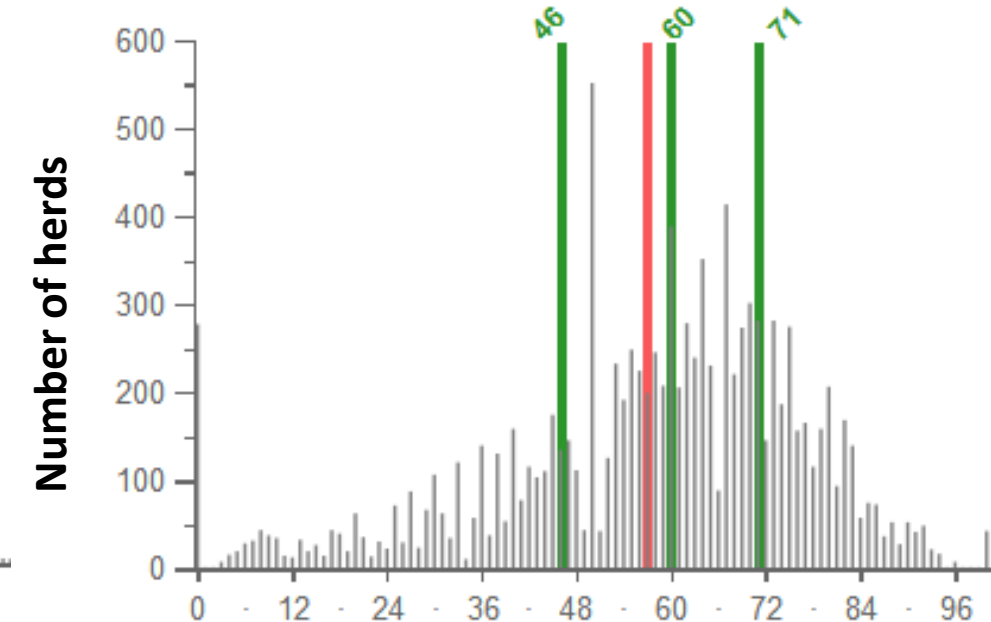
48,151
herds

Avg. 50



11,432
herds

Avg. 57

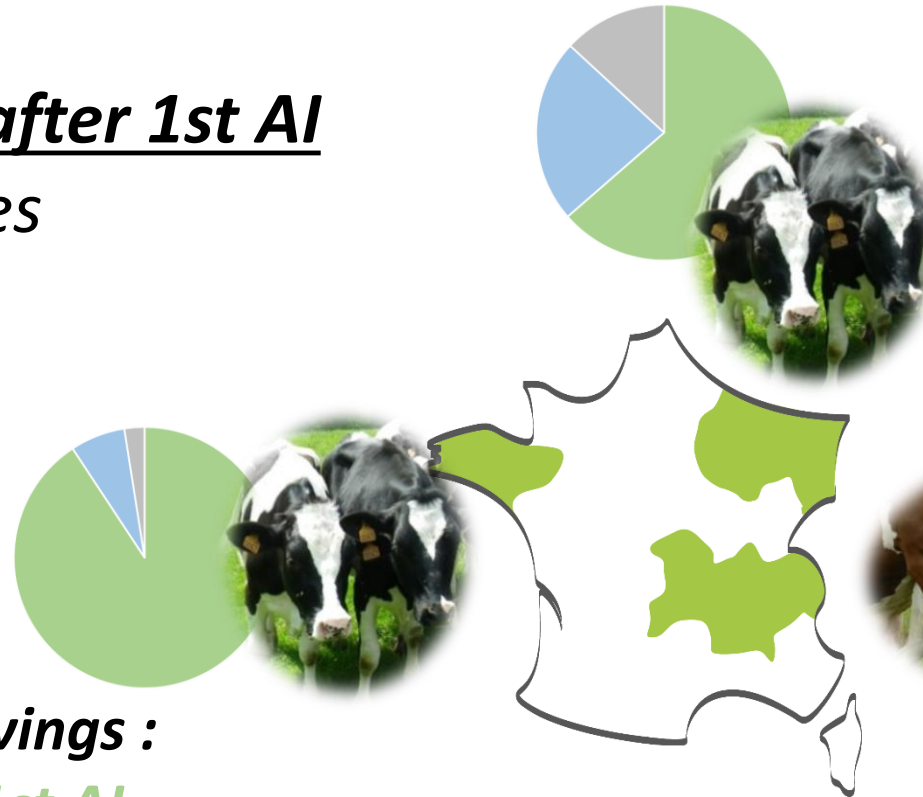


Possible use of the observatory?

To measure differences between areas, breeds, systems...

Example :

- % pregnant cows after 1st AI
- Herds performances
- 2016-2017
- France



2,698 herds, calvings :

- spread = 46 % 1st AI
- semi-grouped = 47 % 1st AI
- very grouped = 49 % 1st AI

7,929 herds, calvings :

- spread = 46 % 1st AI
- semi-grouped = 48 % 1st AI
- very grouped = 50 % 1st AI

3,569 herds, calvings:

- spread = 55 % 1st AI
- semi-grouped = 57 % 1st AI
- very grouped = 57 % 1st AI

Possible use of the observatory?

To eradicate the received ideas

Example : Effect of dairy production: animal effect \neq herd effect

- % pregnant cows after 1st AI

- Herds performances

- 2016-2017 < 7,000 kg milk/year

10,745 herds

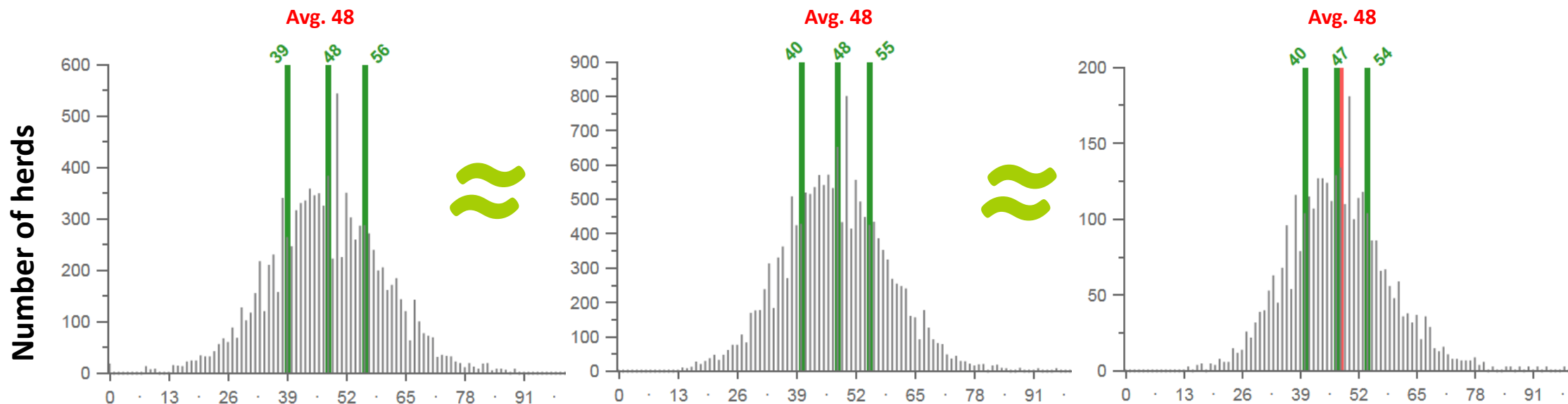
- 7,000 – 8,999 kg milk/year

16,241 herds

- $\geq 9,000$ kg milk/year

3,473 herds

- France



Enjoy your visit on our websites!

www.reproscope.fr

Tutorials: www.idele.fr



Contact: reproscope@idele.fr

Our partners



- Financial support



- Associated Experts



- UMR PRC
- Agrocampus Ouest
- National Veterinary School of Alfort
- Chambers of Agriculture
- Milk Recording Organisations
- Beef Performance Recording Organisations

- Breeding organisations and insemination centers
- Health protection groups
- Veterinary technical groups
- Bordeaux Sciences Agro
- Agricultural school Les Vaseix